



Issue: 2.2

ANTARES 11



Table of contents

Introduction	Exterior	Interior	Systems
Specifications	KSPs	KSPs	Performances
Program & USP	Dimensions	Dimensions	
Design	Hardtop	Owner cabin	
Technology	Dimensions	Aft cabin	
	Cockpit	Head	
	Side platform	Wheelhouse	
	Bow sunpad		



General Specifications

Coupe version

Fly version



LOA standard	11,08 m	36'4"
LOA with options	11,16 m	36'7"
Hull length	9,90 m	32'6"
Overall beam	3,51 m	11'6"
Hull beam	3,40 m	11'2"
Air draft standard (coupe version)	2,71 m	8' 11"
Air draft with options (coupe version)	3,28 m	10' 9"
Air draft standard (Fly version)*	3,56 m	11'8"
Air draft with options (Fly version)*	4,64 m	15'3"
Light displacement	6103 kg	13 451 lbs
Light displacement without engines	5132 kg	11 311 lbs
Light displacement (fly version)*	6148 kg	13550 lbs
Light displacement without engines (fly version)*	5483 kg	12085 lbs
Fuel capacity	2 * 400 L	2* 106 US Gal
Water capacity	200 L	53 US Gal
Maximum power	2 * 300 HP	2 * 300 hp
Engine shaft length	XXL	XXL
Certification CE	B8 C11	B8 C11
Certification CE (On the Flybridge)	C5	C5
Architect	BENETEAU Powerboats	BENETEAU Powerboats
Designer	Sarrazin Design	Sarrazin Deisgn



ANTARES 11 program

A WEEKENDER THAT HITS THE RIGHT NOTE

The Antares 11 is the epitome of a safe, seaworthy, and spacious family powerboat, retaining the long-standing signature features of a top-quality range, suited to all kinds of boating. The Antares 11 is the legacy of over 40 years of BENETEAU passion and know-how

BEST VALUE

This family cruiser is reassuringly reliable. Her well protected hull offers comfort and pleasure at sea. Movement on board is made easier by a flush deck between the cockpit and the wheelhouse. It is also safe thanks to the height of the free boards and free-flowing due to a full-width starboard walkway.

MULTI-HOBBIES

The sun pad on the foredeck is ideal for unwinding and is protected from harsh rays by a Bimini top. As for the large aft cockpit, it is completely sheltered by the wheelhouse overhang, ideal for cooler climates. The starboard swim platform increases the size of the cockpit considerably, creating a wonderful sea-view terrace.

FAMILY CRUISING

Located at the bow, the double master cabin is a well above the usual standards. It has a central island bed, lots of storage, large profiled windows on each side, and an en-suite shower room.

The full-beam aft cabin demonstrates how well the space is optimized with its 3 berths. If you count two passengers sleeping in the convertible saloon, the Antares 11 can accommodate up to 7 people in excellent conditions.

A modular cockpit is a social cockpit and, here, the L-shaped bench can be converted to a sunbathing space with the greatest of ease. The seating connects almost seamlessly to the sofa in the lounge area inside, creating a vast relaxation space.





New in 2020 : ANTARES 11 FLY

- With its new flybridge version that fits perfectly into its silhouette, the Antares 11 offers even more comfort on board and sensations in outdoor navigation.
- The flybridge is fitted with a starboard cockpit with an enveloping pilot seat. On the port side, two facing benches form a very pleasant square to share the navigation safely or to allow to settle comfortably for meals at anchor thanks to the removable table, also convertible into sunbathing. Aft, the flyer provides an additional relaxation area on board by offering a large sundeck.
- Options, such as a bimini, aft sun awning, radar mast, or solar panel, can be added.





ANTARES 11 USPs

- ✓ Extended coupe hardtop
- ✓ Side platform
- ✓ Exterior / Interior connection
- ✓ Best in class owner cabin with direct acces to head
- ✓ Full beam mid-cabin





ANTARES 11 FLY USPs

- ✓ Table for up to 4 people next to the pilot station
- ✓ Full length flybridge sunpad on portside
- ✓ Bimini and aft sun awning easily stored under the windscreen
- ✓ Easy access through the cockpit ladder storable against the aft bay



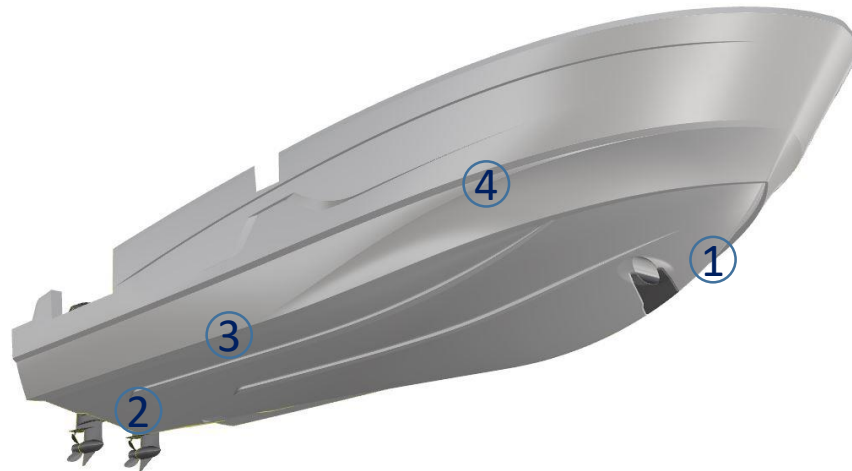
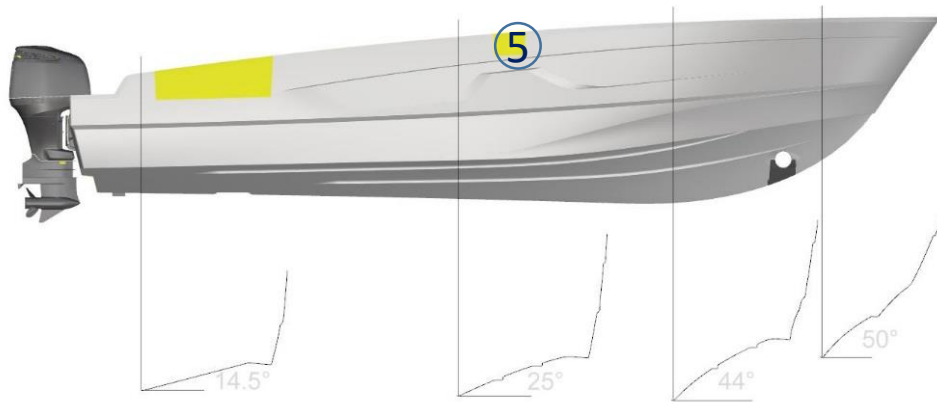


Design





Technology: BENETEAU HULL DESIGN

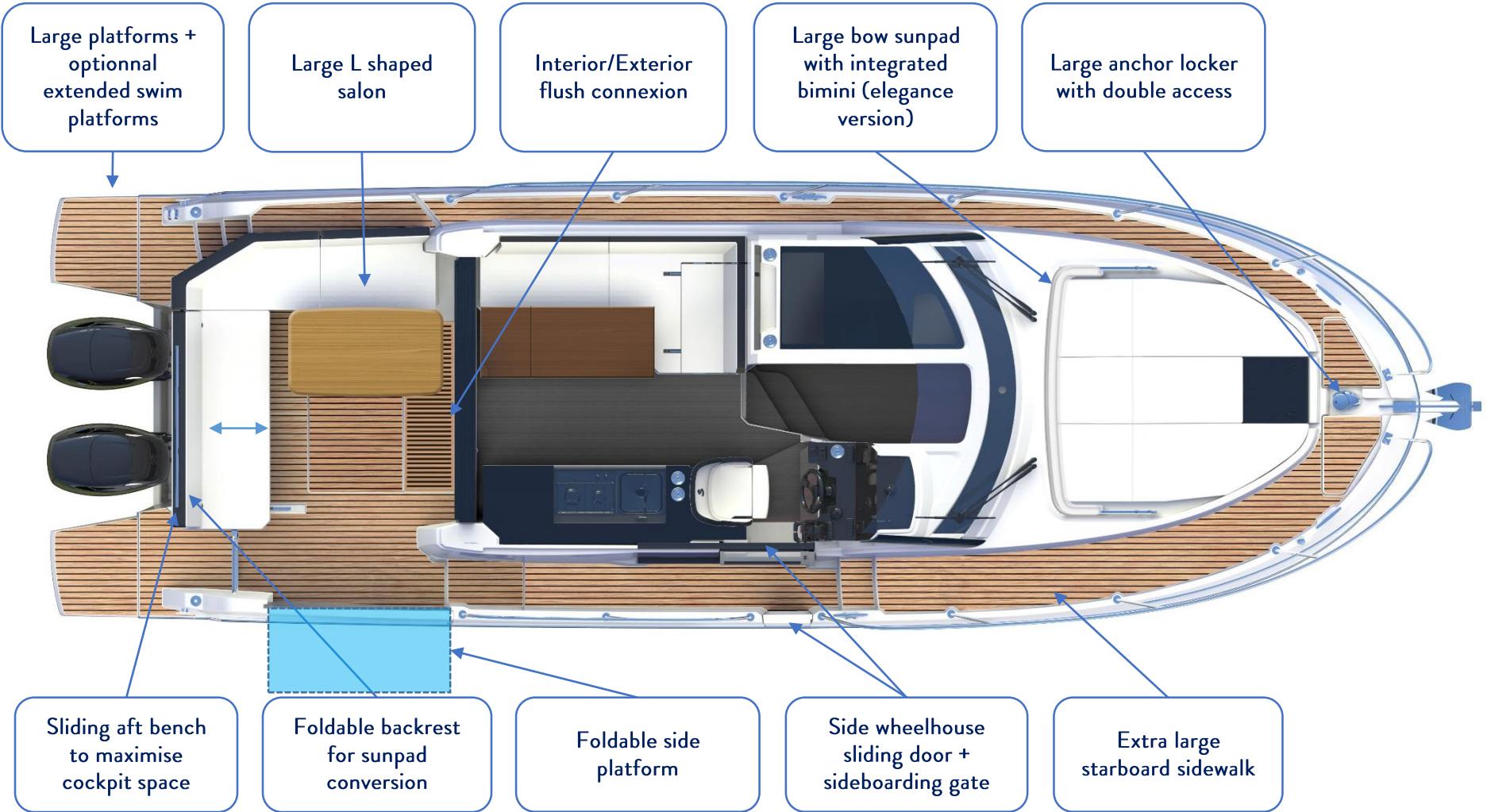


Technical features & benefits:

1. Narrow bow angle for good seaworthiness
2. Flat transom for good speed at low engine RPM
3. Recessed flat chins to optimize stability and grip in turns
4. Sray bow rails to prevent water spray
5. Optimized weight distribution to keep low center of gravity

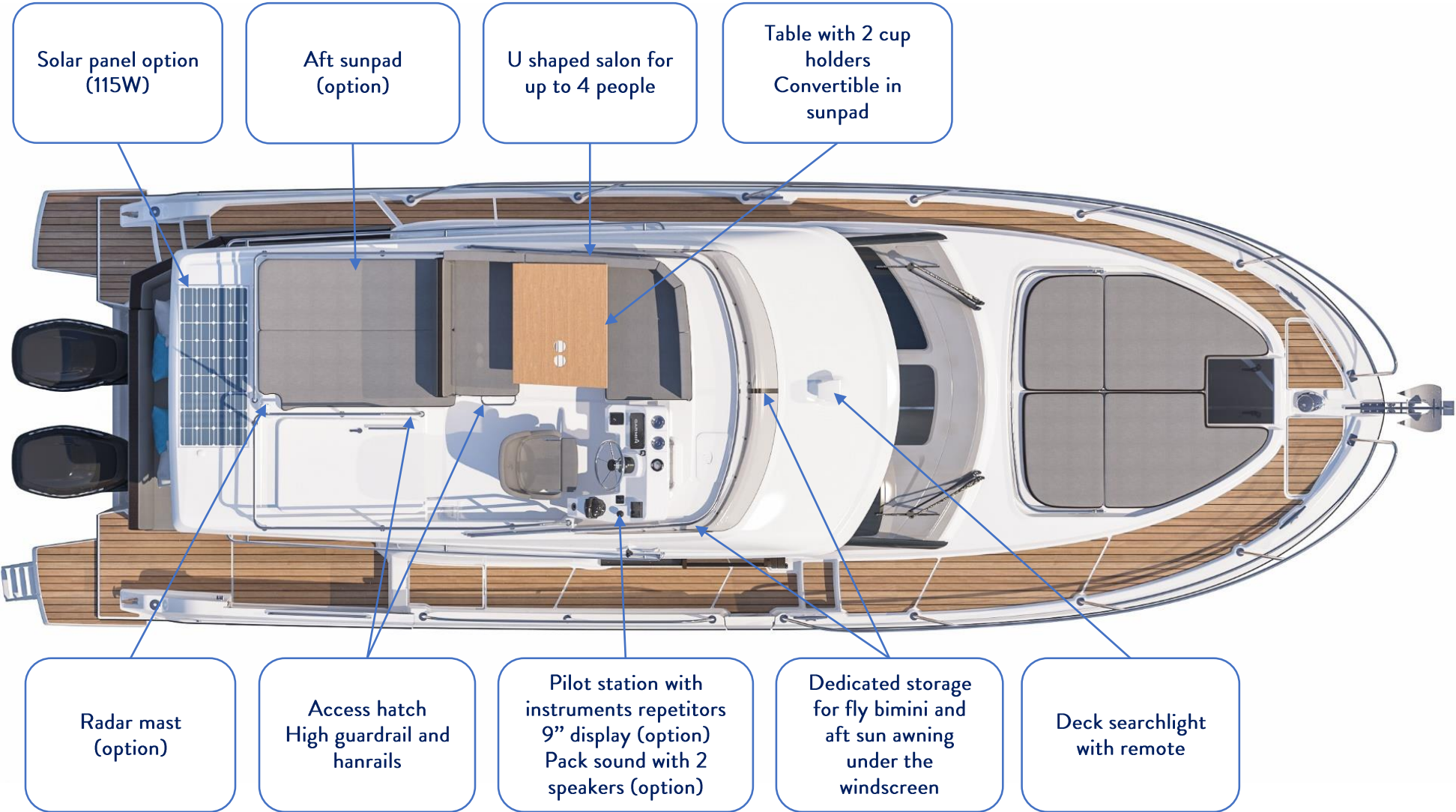


Exterior key selling points



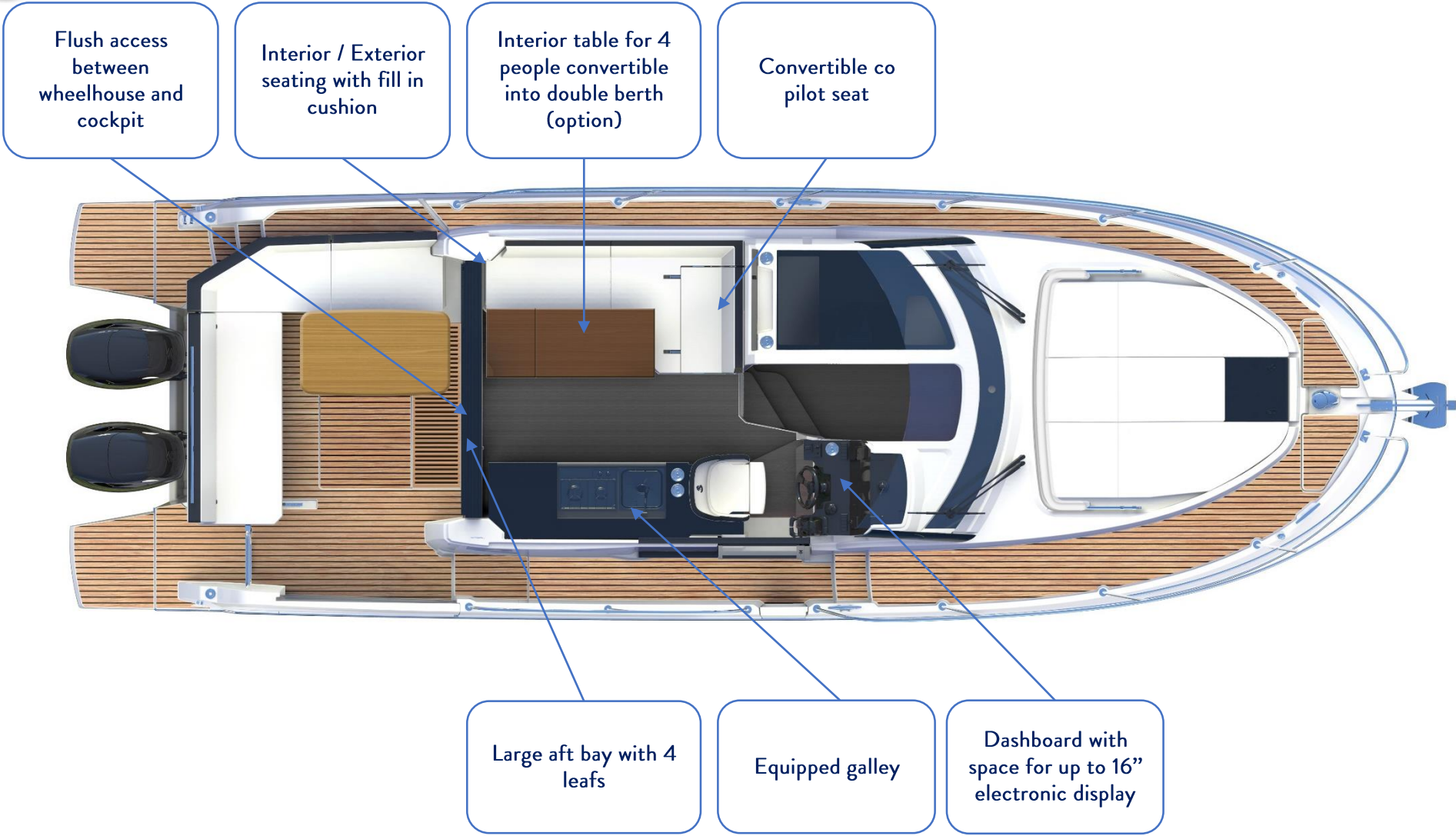


Flybridge version key selling points





Wheelhouse interior key points





Exterior key selling points





Exterior flybridge version key selling points

Long extended roof
with solar panel
option

Radar mast option

Salon with table
for 4 / large
sunpad

Pilot station with
bolster seat

Protective
windshield

Deck searchlight

Flybridge sliding
ladder





Standard or elegance version

Standard version

- Aft cockpit bench cushions / convertible in sunpad
- Bow sundeck cushions
- Interior salon cushions
- Pilot seat



19/11/2020

Elegance version

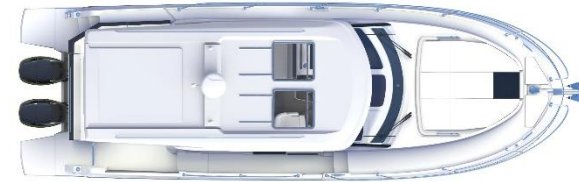
- Aft cockpit bench cushions / convertible in sunpad
- Bow sundeck cushions with adjustable backrest
- Bow canopy
- Interior salon cushions
- Pilot seat



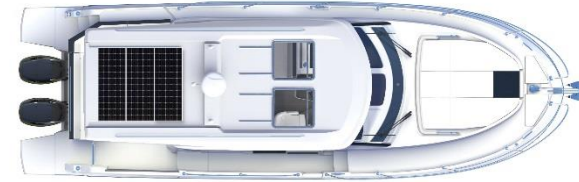
ANTARES 11 – Book marketing

15

Coupe version: Hardtop configuration



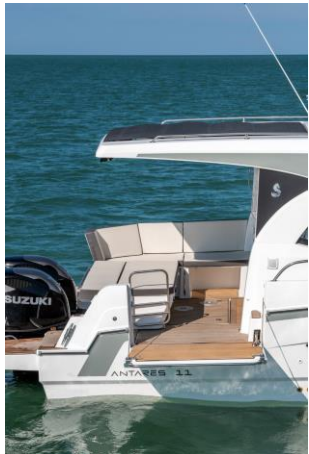
Standard version: white GRP hardtop



Option for standard version: solar panels (3x115W)

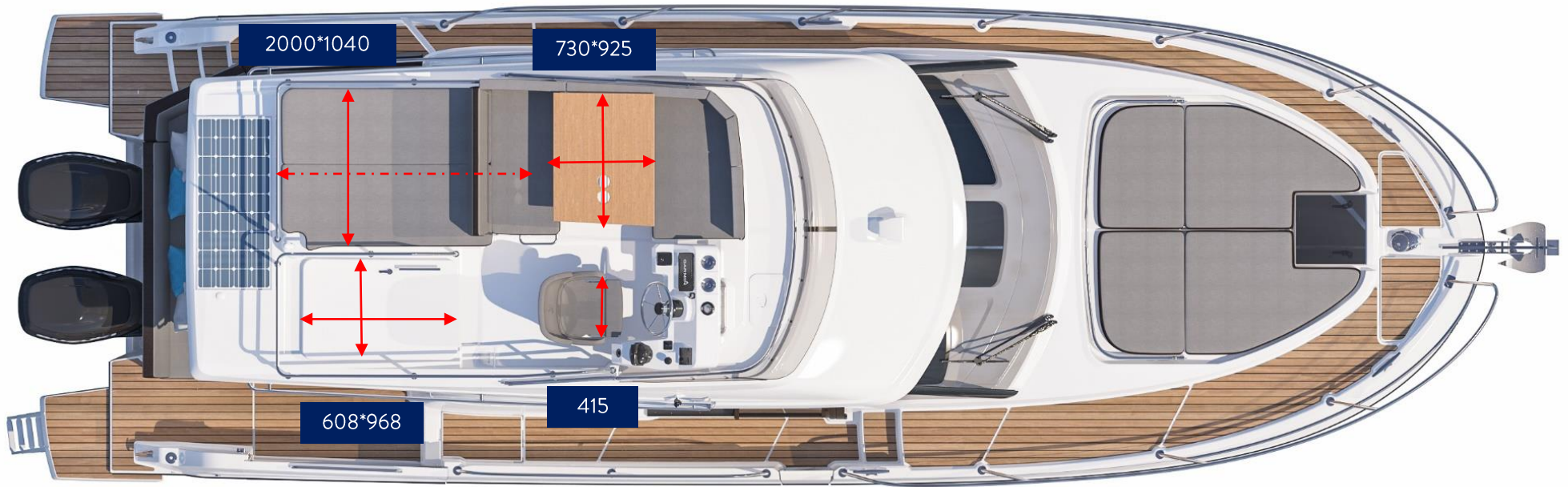


Soft top version with electric opening sunshade + 2 additional roof windows





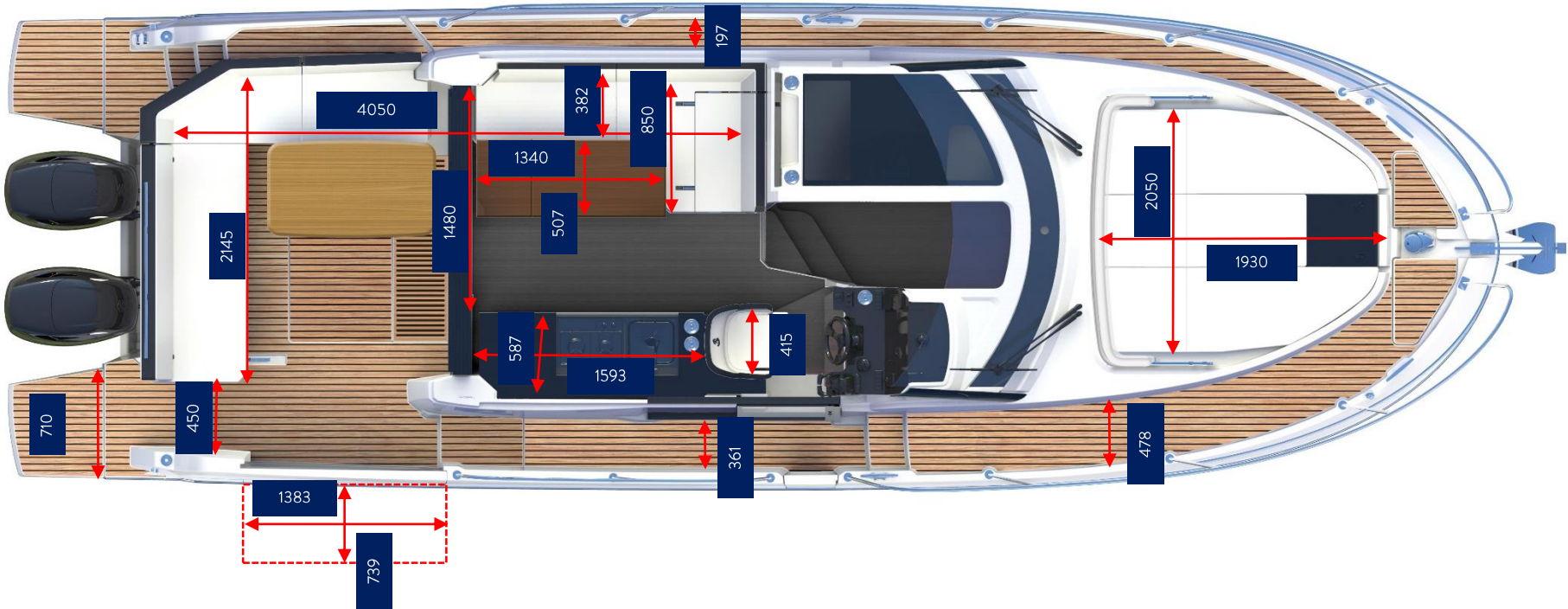
Flybridge version dimensions



*Measurements given in millimeters



Exterior dimensions (in mm)



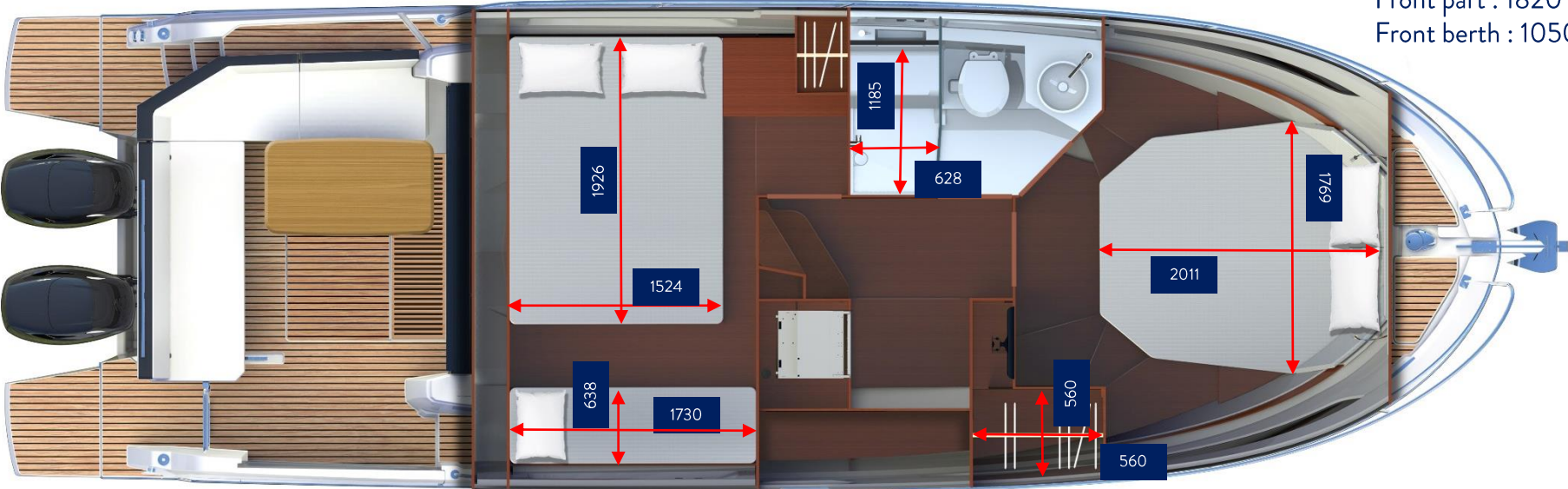
Dimension of new GRP interior standard table (also as separate option BET02 for cockpit) = 601*1207)



Interior dimensions (in mm)

Headroom (mm) :

- Aft cabin berth : 520
- Aft cabin entrance : 1920
- Entrance : 2000
- Head : 1900
- Shower : 1870
- Front part : 1820
- Front berth : 1050





Cockpit



Electric sunshade version

Asymetric portside sidewalk

Wide aft bay opening

Interior / Exterior flush connection

Large L shape cockpit seating

Integrated complete aft closure (option)

Standard side platform (electric assistance in option)

Aft bench with sunpad conversion



Bow sunpad



Bow sunpad canopy (elegance version)

Adjustable headrests (elegance version)

Double hatch for anchor locker

Extra large asymmetric starboard sidewalk



Side platform

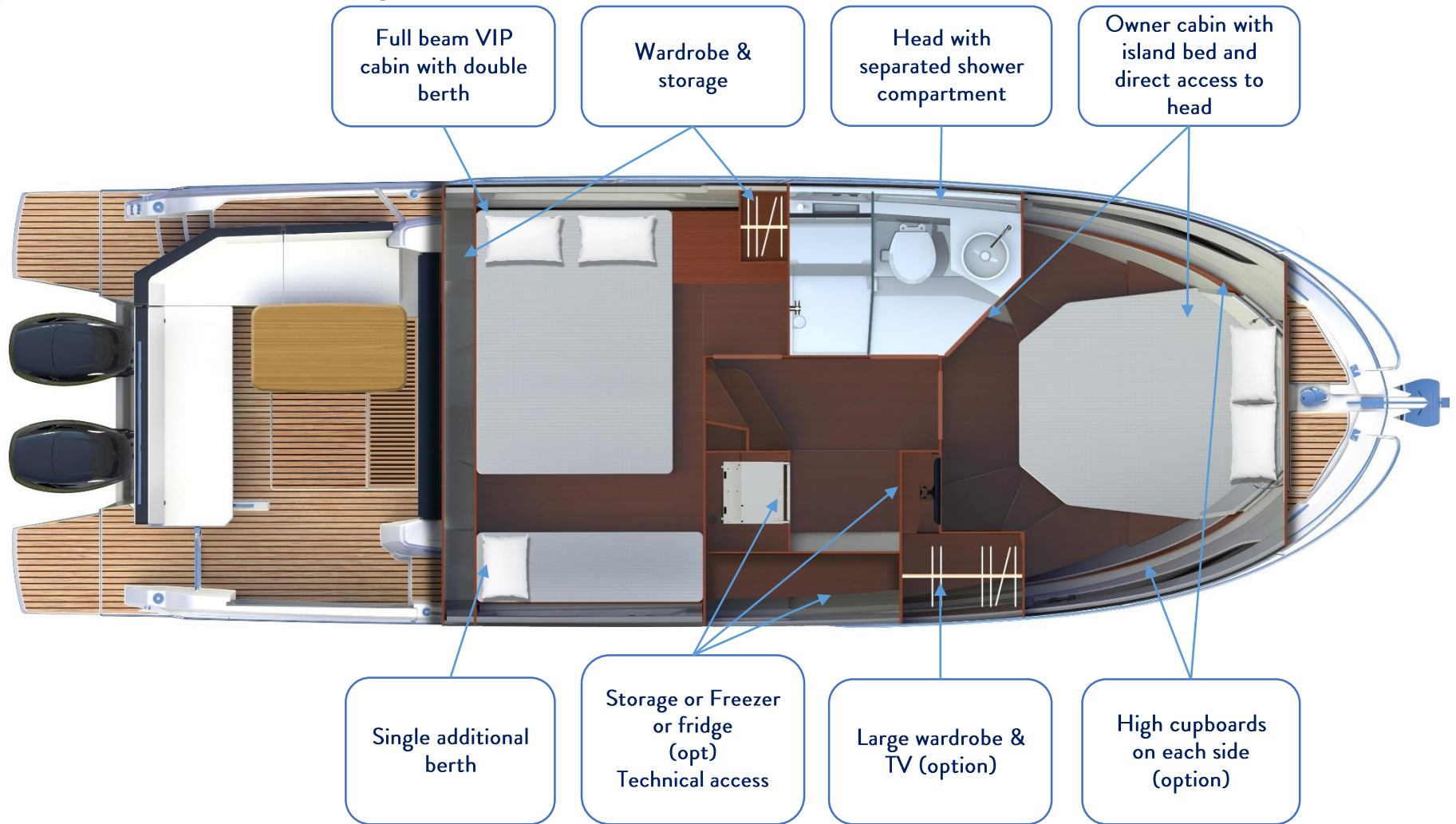


Weight limit :
180kg

Standard side
platform (electric
assistance in
option)



Interior key selling points





Owner cabin



2 large side windows with opening portholes + deck hatch

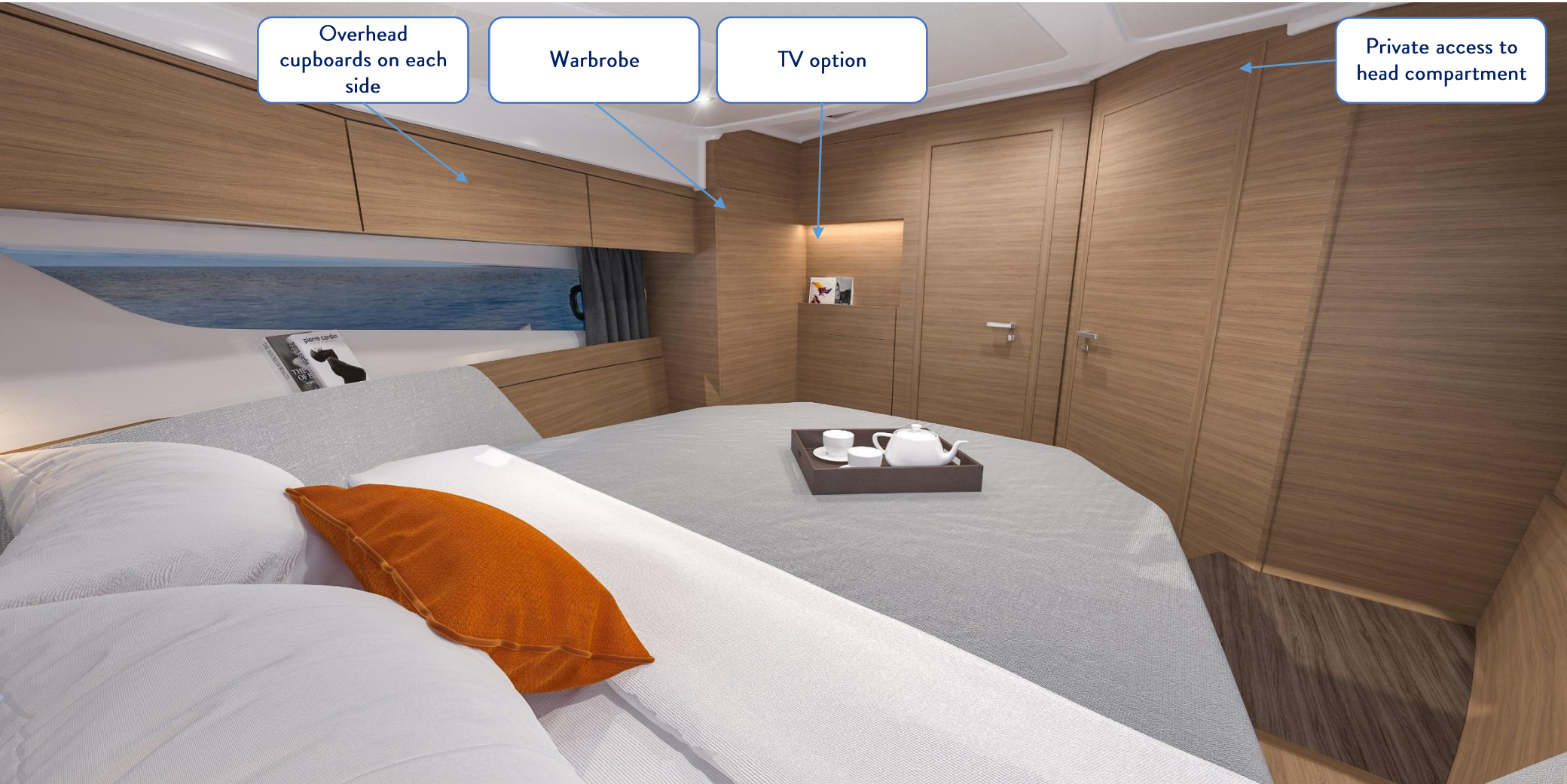
High cupboards on each side (option)

Large island bed with storage underneath

Easy access from both sides of the bed



Owner cabin



Overhead cupboards on each side

Wardrobe

TV option

Private access to head compartment



Aft Cabin

Wardrobe and storage

Large hull windows with opening portholes on each side

Single third berth on portside

Large double berth with high headroom





Salon



Natural light and visibility

Large wheelhouse windows with opening window (trim level)

Copilot seat convertible in salon seating

Large L shape seating

Table convertible into double berth



Pilot station



Direct access through the side wheelhouse sliding door

Ergonomic and secured pilot station : handrails, storage,...

Options:
 Pre rig
 16" display
 Zipwake
 Bow thruster
 VHF
 Fusion sound system



Galley



Overhead cupboards (option)

Large countertop space

Sink and 2 gas stoves

80 liters fridge

Micro wave (option)

Storage



Performances coupe version 2*250 HP SUZUKI APXX

SUZUKI 2 X 250 CV (HP)						
<u>Caractéristiques / Specifications :</u>						
2 moteur Hors Bord / 2 Out Board engine : DF 250 APXX (Electrical remote)						
Hélice 3 pales / Propeller 3 blades : 16 x 17 inox						
position of engine : 2nd hole						
Déplacement total du bateau testé / Total displacement of boat tested : 3 people, 800L fuel , 7300kg						
Regime en tours par minute au tableau de bord / RPM on instrument panel	Vitesse en nœuds moyenne au radar / Average speed on the radar in knots	Consommation en litres par heure / consumption in liter per hour	Rendement / Efficiency (NM/L)	o	Rendement / Efficiency (NM/USGal)	Autonomie en NM (avec réserve 20%) /Range in NM (with 20% fuel supply)
650	3	3,5	0,86 NM	0,9 USGal	3,2 NM	548,57 NM
1000	4	8	0,50 NM	2,1 USGal	1,9 NM	320,00 NM
1500	5	14,8	0,34 NM	3,9 USGal	1,3 NM	216,22 NM
2000	7	19,8	0,35 NM	5,2 USGal	1,3 NM	226,26 NM
2500	9	32,4	0,28 NM	8,6 USGal	1,1 NM	177,78 NM
3000	10	48,2	0,21 NM	12,7 USGal	0,8 NM	132,78 NM
3500	11	63,4	0,17 NM	16,8 USGal	0,7 NM	111,04 NM
4000	16	93	0,17 NM	24,6 USGal	0,7 NM	110,11 NM
4500	23	114,8	0,20 NM	30,3 USGal	0,8 NM	128,22 NM
5000	28	135	0,21 NM	35,7 USGal	0,8 NM	132,74 NM
5500	33	170	0,19 NM	44,9 USGal	0,7 NM	124,24 NM
5800	36	190	0,19 NM	50,2 USGal	0,7 NM	121,26 NM

Conditions optimales théoriques et purement indicatives des essais : / Optimal theoretical conditions. purely indicative for trials :

Coque neuve. Pas d'antifouling / New hull, No antifouling

Vent: 25 nœuds. Mer agitée. Résultats à pondérer / wind : 25 knots, rough sea : results to "weight"

03/2020



Performances coupe version 2*300 HP SUZUKI APXX

SUZUKI 2 X 300 CV (HP)						
<i>Caractéristiques / Specifications :</i>						
2 moteur Hors Bord / 2 Out Board engine : DF 300 APXX (Electrical remote)						
Hélice 3 pales / Propeller 3 blades : 16 x 18,5 inox						
position of engine : 2nd hole						
Déplacement total du bateau testé / Total displacement of boat tested : 3 people, 800L fuel , 7300kg						
Regime en tours par minute au tableau de bord / RPM on instrument panel	Vitesse en nœuds moyenne au radar / Average speed on the radar in knots	Consommation en litres par heure / consumption in liter per hour	Rendement / Efficiency (NM/L)	Consommation totale en USGal / heure Total consumption in GPH	Rendement / Efficiency (NM/USGal)	Autonomie en NM (avec réserve 20%) /Range in NM (with 20% fuel supply)
650	2	3,7	0,54 NM	1,0 USGal	2,0 NM	345,95 NM
1000	3	7	0,43 NM	1,8 USGal	1,6 NM	274,29 NM
1500	5	15,7	0,32 NM	4,1 USGal	1,2 NM	203,82 NM
2000	7,1	20	0,36 NM	5,3 USGal	1,3 NM	227,20 NM
2500	8,4	33,9	0,25 NM	9,0 USGal	0,9 NM	158,58 NM
3000	10	51,8	0,19 NM	13,7 USGal	0,7 NM	123,55 NM
3500	13,6	71,2	0,19 NM	18,8 USGal	0,7 NM	122,25 NM
4000	23	88,6	0,26 NM	23,4 USGal	1,0 NM	166,14 NM
4500	27,4	111	0,25 NM	29,3 USGal	0,9 NM	157,98 NM
5000	31,2	133,4	0,23 NM	35,2 USGal	0,9 NM	149,69 NM
5500	34,3	188	0,18 NM	49,7 USGal	0,7 NM	116,77 NM
5700	38	192	0,20 NM	50,7 USGal	0,7 NM	126,67 NM
<i>Conditions optimales théoriques et purement indicatives des essais: /Optimal theoretical conditions, purely indicative for trials :</i>						
Coque neuve. Pas d'antifouling / New hull, No antifouling						
Vent: 25 nœuds. Mer agitée. Résultats à pondérer / wind : 25 knots, rough sea : results to "weight"						
0 -> 20 knts : 11,1s						
0 -> 25kts : 14,5s						
03/2020						



Performances coupe version 2*300 HP SUZUKI BTXX

ANTARES 11

SUZUKI 2 X 300 CV (HP)						
<i>Caractéristiques / Specifications:</i>						
2 moteur Hors Bord / 2 Out Board engine : DF 300 BTXX (Electrical remote)						
Hélice 3 pales / Propeller 3 blades : 15,5 x 21 inox						
position of engine : 5 th hole / 5 ème trou						
Déplacement total du bateau testé / Total displacement of boat tested : 7307 kg						
3/4 fuel tank / full water tank / 3 people						
Regime en tours par minute au tableau de bord / RPM on instrument panel	Vitesse en nœuds moyenne au radar / Average speed on the radar in knots	Consommation en litres par heure / consumption in liter per hour	Rendement / Efficiency (NM/L)	Consommation totale en USGal / heure Total consumption in GPH	Rendement / Efficiency (NM/USGal)	Autonomie en NM (avec réserve 20%) /Range in NM (with 20% fuel supply)
650	2,1	4,8	0,44 NM	1,3 USGal	1,7 NM	280,00 NM
1000	4	10	0,40 NM	2,6 USGal	1,5 NM	256,00 NM
1500	6	15,8	0,38 NM	4,2 USGal	1,4 NM	243,04 NM
2000	7,8	21,6	0,36 NM	5,7 USGal	1,4 NM	231,11 NM
2500	9	38	0,24 NM	10,0 USGal	0,9 NM	151,58 NM
3000	10,5	52	0,20 NM	13,7 USGal	0,8 NM	129,23 NM
3500	14,8	73	0,20 NM	19,3 USGal	0,8 NM	129,75 NM
4000	23	84,5	0,27 NM	22,3 USGal	1,0 NM	174,20 NM
4500	28	116	0,24 NM	30,6 USGal	0,9 NM	154,48 NM
5000	32	150	0,21 NM	39,6 USGal	0,8 NM	136,53 NM
5500	36	195	0,18 NM	51,5 USGal	0,7 NM	118,15 NM
5700	37,5	212	0,18 NM	56,0 USGal	0,7 NM	113,21 NM
6000	40	216	0,19 NM	57,1 USGal	0,7 NM	118,52 NM

Conditions optimales théoriques et purement indicatives des essais: /Optimal theoretical conditions, purely indicative for trials :
Coque neuve. Eau de mer. Pas d'antifouling. / New hull, Saltwater / No antifouling

mars-20